

Situations-Plan

über den Gemeinde-Werker

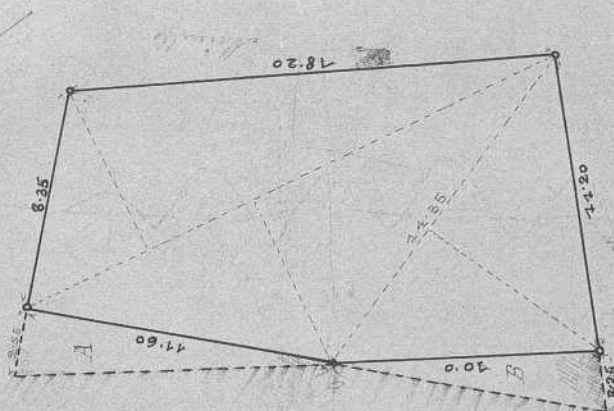
in Mairzen.

1.200.

Wirkliche Fläche = 202.7 (m²) = 56350 qtr.

$$\Delta A = 14.79 \text{ m}^2 = 4.110 \text{ qtr.}$$

$$\Delta B = 11.25 \text{ m}^2 = 3.130 \text{ qtr.}$$



1. und 1.7.1904 August 1904.

Carl Gott.